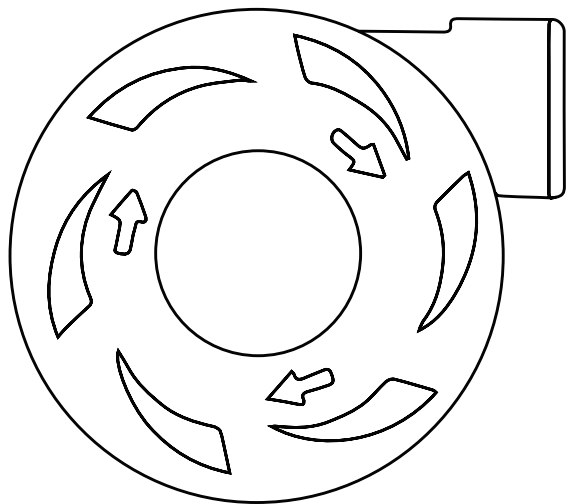




RB4000

*RB4000*

# CENTRIFUGAL BLOWER OWNER'S MANUAL



## **WARNING**

---

Service procedures beyond the scope of this manual should only be performed by trained service personnel.

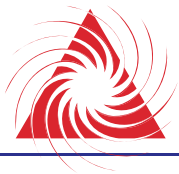
## **IMPORTANT**

---

Read the following safety instructions carefully. Disconnect blower from electrical source before using an approved lockout/tagout procedure before attempting service.

# CONTENTS

Warning, Note and Certification.....	2	Blower Head Rotation.....	24
Safety Instructions.....	4	Mounting Plate Position.....	25
Lock Out/ Tag Out Procedures.....	5	Blower Head Assembly.....	26
Description and Model Identification.....	6	Balanced Bearing Housing Assembly.....	27
Arrival and Inspection.....	7	Steel Bearing Tension Pulley.....	28
Storage Conditions.....	7	Air Filter Information.....	29
Environmental Conditions.....	7	Inlet Filter Assy.....	30
Space Requirements.....	8	Blower Maintenance Schedule.....	31-32
Blower Installation.....	8	<small>Filter Maintenance, Pulley Alignment, and Bearing, Motor Pulley and Bushing Maintenance)</small>	
Frequency of Inspection.....	8	Spring Replacement Instructions.....	33
Blower Dimensions.....	9	Trouble Shooting Guidelines.....	34-35
Mounting Plate Position.....	10	Important Notes.....	36
Motor Selection Guidelines.....	11	<small>(In the Event of a Breakdown, When to Ship Back to Republic, Skilled VS Unskilled, Disabling, Dismantling and Scrapping)</small>	
<small>(Structural, Mechanical and Electrical Specifications, Motor Sizing, BLower Max Rotational)</small>		Warranty Terms and Conditions.....	37
Torque for Fastening Screws .....	12		
Mounting Bolt Length.....	12		
Motor Wiring and Start-Up.....	13		
Drive Belt Information.....	14		
Belt Sizing Information.....	14		
Belt Removal and Installation.....	15-17		
Tension Spring Hole Positions.....	18		
Motor Pulley Information.....	19		
Motor Pulley Installation.....	20		
Motor Pulley Removal.....	21		
Motor Pulley and Bushing Maintenance.....	22		
Bore Part Number.....	23		



## SAFETY INSTRUCTIONS

1. Always use qualified electrical and mechanical personnel for installation and maintenance of Republic blowers and motors.
2. Disconnect the electrical power at the motor starter, fuse box or circuit breaker before working on the system. Take special precautions to make sure the power cannot be turned on while you are working on the blower. **Use an approved Lock Out/Tag Out system.**
3. Make sure the motor is electrically grounded, the mounting bolts are properly secured, and all guards are in place before start-up.
4. Wear safety glasses and earplugs when working on the blower, air knife or discharge nozzles within a Republic Blower System.
5. **Do not operate blower/motor assembly with the belt guard removed.** Make sure to install the inlet air filter or piping to blower inlet, before starting the blower/ motor.
6. Do not operate blower with the outlet open to atmosphere. Connect system piping or butterfly valve to prevent overloading the motor. **Check the final installation for proper amp loads.**
7. Keep all tools, loose clothing and hands away from rotating or moving parts while the unit is running. Never run the blower unit without the belt guard installed.
8. Inspect the blower at regular intervals for damaged or worn parts. **Replace damaged parts immediately. Do not connect or turn on a damaged blower.**
9. Inspect the inlet air filter at regular intervals and replace when necessary. A dirty air filter can cause improper blower performance.
10. **Use only genuine Republic Manufacturing brand replacement parts or warranty could be voided.**

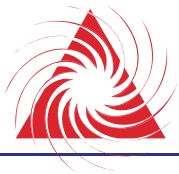
## **BLOWER DESCRIPTION AND MODEL IDENTIFICATION**

Republic Blower Systems are industrial grade centrifugal blowers capable of producing high velocity air, for drying or cleaning parts, at low operating costs. Six models are available:

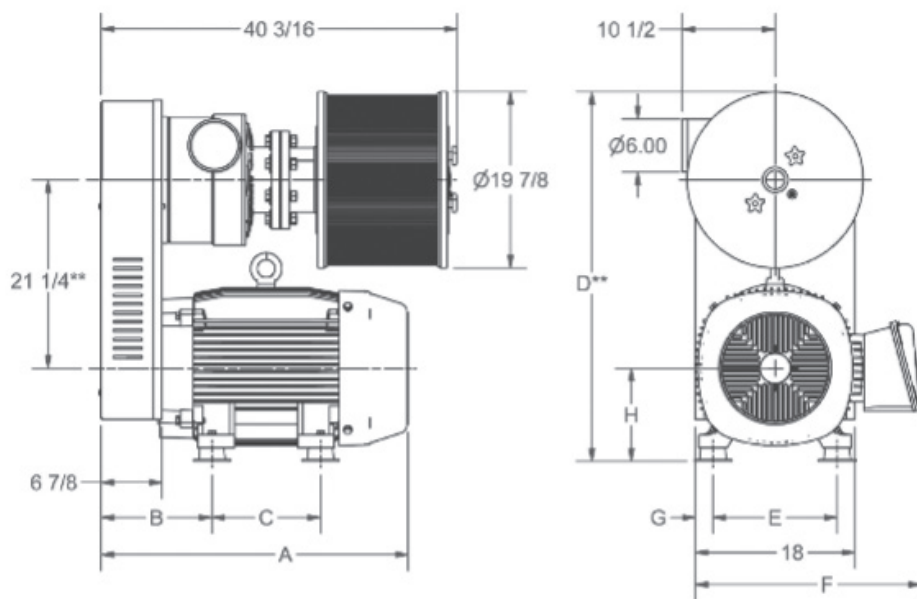
- RB500: Compact Model with 3-7.5 HP Motor Sizes
- RB800: Compact Model with or without Motor. 3-15 HP Motor Sizes
- RB1200HC: Standard Model with or without Motor. 3-25 HP Motor Sizes
- RB2000: Standard Model with or without Motor. 20-30 HP Motor Sizes
- RB2400: Dual Headed Model with or without Motor. 25-50 HP Motor Sizes
- RB4000: Standard Model with or without Motor. 40-75 HP Motor Sizes

Republic Blowers have a nameplate containing the serial and model number located on the blower head near the exhaust port. The motor manufacturers' nameplate is located on the motor. When placing a service call, please provide the Republic serial number. Call us at (800) 847-0380 or e-mail [info@republic-mfg.com](mailto:info@republic-mfg.com). You can find an RMA Form online at [www.republic-mfg.com](http://www.republic-mfg.com).

- All centrifugal blower models come with mounting brackets and rubber vibration isolators.
- All models have blower housings that can be rotated to almost any position with ease.
- All models are capable of converting over to water-cooled systems (with optional purchased parts).
- All models come with a self-tensioning belt.



## EQUIPMENT ARRIVAL AND INSPECTION



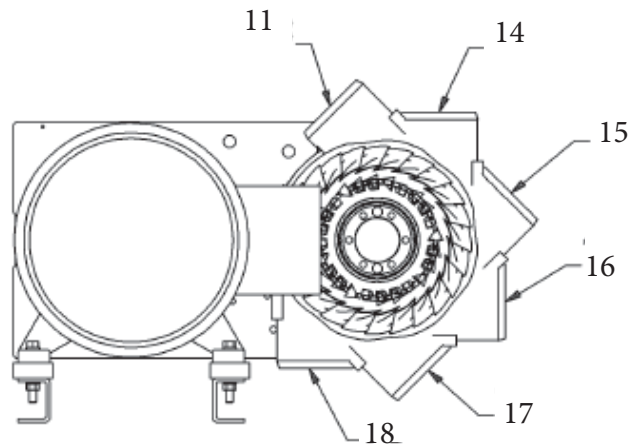
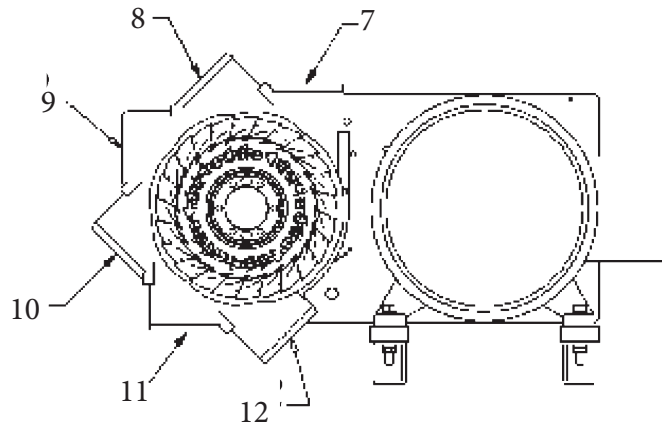
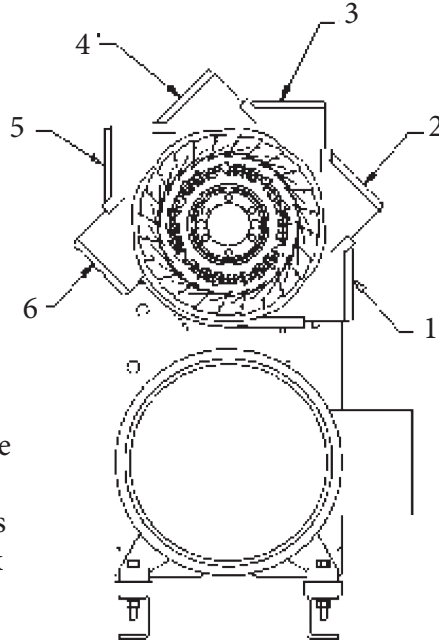
RB4000	unit	A	B	C	D	E	F	G	H
30 HP	in	28 <sup>1</sup> / <sub>16</sub>	9 <sup>5</sup> / <sub>8</sub>	16	41 <sup>1</sup> / <sub>16</sub>	8 <sup>3</sup> / <sub>8</sub>	22 <sup>1</sup> / <sub>8</sub>	4 <sup>1</sup> / <sub>16</sub>	10 <sup>1</sup> / <sub>2</sub>
	mm	712.788	244.475	406.4	1058.86	206.375	561.975	125.412	266.7
40 HP	in	31 <sup>3</sup> / <sub>8</sub>	9 <sup>7</sup> / <sub>8</sub>	16	41 <sup>1</sup> / <sub>16</sub>	14 <sup>3</sup> / <sub>8</sub>	23 <sup>3</sup> / <sub>8</sub>	11 <sup>1</sup> / <sub>16</sub>	10 <sup>1</sup> / <sub>2</sub>
	mm	803.275	250.825	406.4	1058.86	371.475	600.075	280.988	266.7
50 HP	in	31 <sup>3</sup> / <sub>4</sub>	9 <sup>7</sup> / <sub>8</sub>	16	41 <sup>1</sup> / <sub>16</sub>	14 <sup>3</sup> / <sub>8</sub>	23 <sup>3</sup> / <sub>8</sub>	11 <sup>1</sup> / <sub>16</sub>	10 <sup>1</sup> / <sub>2</sub>
	mm	806.45	250.825	406.4	1058.86	371.475	600.075	280.988	266.7
60 HP	in	34 <sup>3</sup> / <sub>16</sub>	12 <sup>1</sup> / <sub>2</sub>	11 <sup>1</sup> / <sub>4</sub>	41 <sup>1</sup> / <sub>16</sub>	14	27 <sup>1</sup> / <sub>16</sub>	2	10 <sup>1</sup> / <sub>2</sub>
	mm	792.163	317.5	285.75	1058.86	355.6	687.387	50.8	266.7
75 HP	in	34 <sup>3</sup> / <sub>16</sub>	12 <sup>1</sup> / <sub>2</sub>	12 <sup>1</sup> / <sub>4</sub>	41 <sup>1</sup> / <sub>16</sub>	14	27 <sup>1</sup> / <sub>16</sub>	2	10 <sup>1</sup> / <sub>2</sub>
	mm	792.163	317.5	311.15	1058.86	355.6	687.387	50.8	266.7

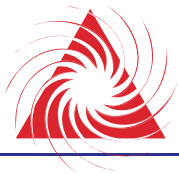
Weight	lbs.	kg
30 HP	395	179.169
40 HP	528	239.497
50 HP	587	266.259
60 HP	820	371.946
75 HP	890	403.697

Weight	lbs.	kg
RETRO KIT	280	1247.006

## MOUNTING PLATE POSITION

Position No. 5 is standard unless otherwise specified by customer. If possible, try to avoid Position No. 13-18 on 20HP blowers because of air filter and motor electric box interference.





## **EQUIPMENT ARRIVAL AND INSPECTION**

Inspect the blower system at time of receipt to ensure that all components and accessories, as noted on the packing slip, were received and in good condition. Verify that the serial number on the packing slip matches the serial number shown on the blower head nameplate. Inspect the blower and motor assembly to ensure that the motor horsepower and voltage are correct.

If any equipment was damaged in transit, you will need to make a claim against the freight carrier immediately. If you have any shortages, discrepancies, or damage, please call your Republic Manufacturing Distributor or Republic Manufacturing at (800) 847-0380.

## **INSTALLATION**

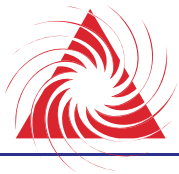
Lift the blower system by the lifting eye mounted on the top of the motor or by picking the blower up from underneath the motor. Do not lift the blower by the belt guard. Vibration isolators are included with every blower. Bolt your Republic Blower in place by the mounting brackets supplied with the blower. Use a minimum of four (4) mounting bolts. See the Specifications Section of the manual for equipment weights. No training required.

1. Have a qualified electrician configure the motor to your incoming voltage as noted in the Motor Wiring Section of the manual. Refer to the nameplate on the motor for the correct power supply requirements.
2. The blower should be located in a place where the drive belt and intake air filter can be easily serviced and maintained.
3. Avoid any type of liquid over spray or continuous wash down of the blower. Shield the blower if needed. Flooding the blower can cause damage to the system.
4. Double check the pulley alignment and install the belt as shown in the Motor Pulley and Installation Belt diagrams. Be sure to re-fasten the belt guard.
5. Install the inlet air filter – Improper filtration will void warranty. Install system piping and check motor amperage draw. High amperage draw may indicate too much flow. Contact Republic Manufacturing or the local distributor with any questions.



## MOTOR WIRING AND START-UP

- **Only qualified personnel** should perform wiring or maintenance on the blower assembly.
- Never run a centrifugal blower to atmosphere, as this can cause overloading and damage the motor. Always check your installation to make sure the motor is running within the motor manufacturers specified amp ranges.
- **MOTOR ROTATION MUST BE CHECKED PRIOR TO INSTALLING THE BELT.** Running the blower/motor assembly backwards will cause improper performance and damage the blower.
- With the belt removed, “bump” the power to determine rotation of motor.
- The blower should be rotating clockwise (CW) from the belt side of the blower, counter-clockwise (CCW) if you are on the motor side or impeller side of the blower. Rotation arrows on the blower cast housing (Motor Side) show correct rotation of impeller rotation. If the motor is going the wrong direction, have your qualified electrician change the direction of rotation.
- If the blower is allowed to run in the wrong direction, you could cause damage to the idler pulley assembly spring or belt. Even in reverse, a centrifugal blower will still provide a substantial amount of airflow and pressure, but it will not perform to your specified needs.



## **DRIVE BELT INFORMATION**

Republic utilizes a 20-groove belt on the RB4000 and has the part number stamped on the flat side of the belt. Republic recommends that you keep spare belts in stock. It is also recommended that replacement belts be purchased from Republic Manufacturing or a Republic distributor, to ensure that belt quality and blower performance are maintained. Belts do vary from manufacturer to manufacturer, and all Republic belts are inspected for belt thickness and imperfections prior to shipment.

## **BELT SIZING INFORMATION**

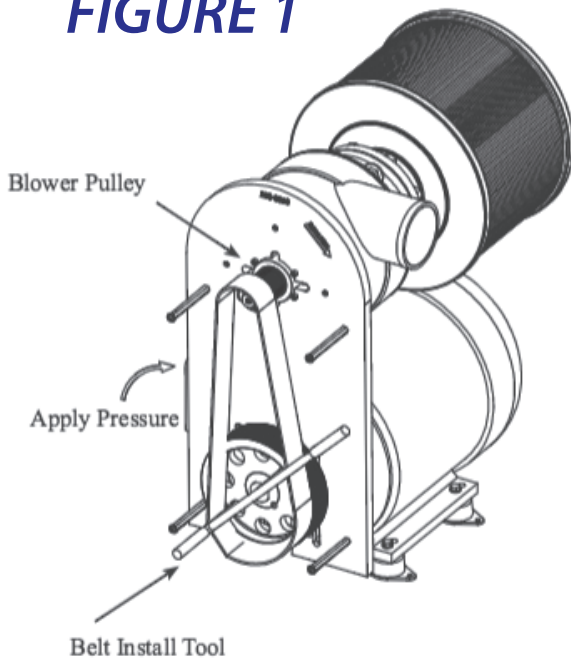
Please find the part number stamped on the face of the small stainless steel blower pulley, and then refer to the following chart for the correct belt size.

<b>RB4000 Replacement Parts Reference</b>	
<b>Blower Pulley Part No.</b>	<b>Belt Part No.</b>
231-3575	230-6620
231-3595	230-6620
231-0315	230-6620
231-0335	230-6620
231-0355	230-6620
231-0375	230-6620
231-0395	230-6620

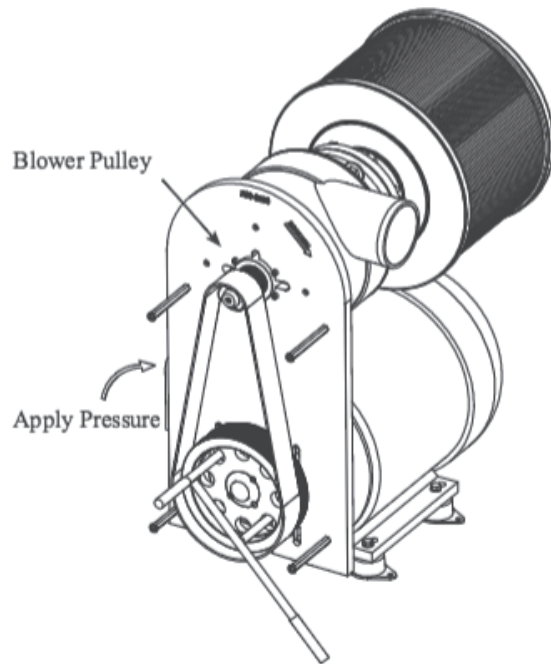
## BELT REMOVAL AND INSTALLATION

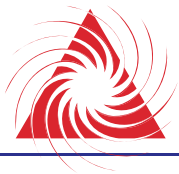
1. Position belt around the top of the blower pulley and hold firm.
2. Position belt around bottom half of motor pulley and hold firm.
3. Position Belt Installation Tool in motor pulley.
4. Rotate motor pulley while applying pressure to the belt by hand to “walk” the belt onto both pulleys until grooves are aligned.

**FIGURE 1**



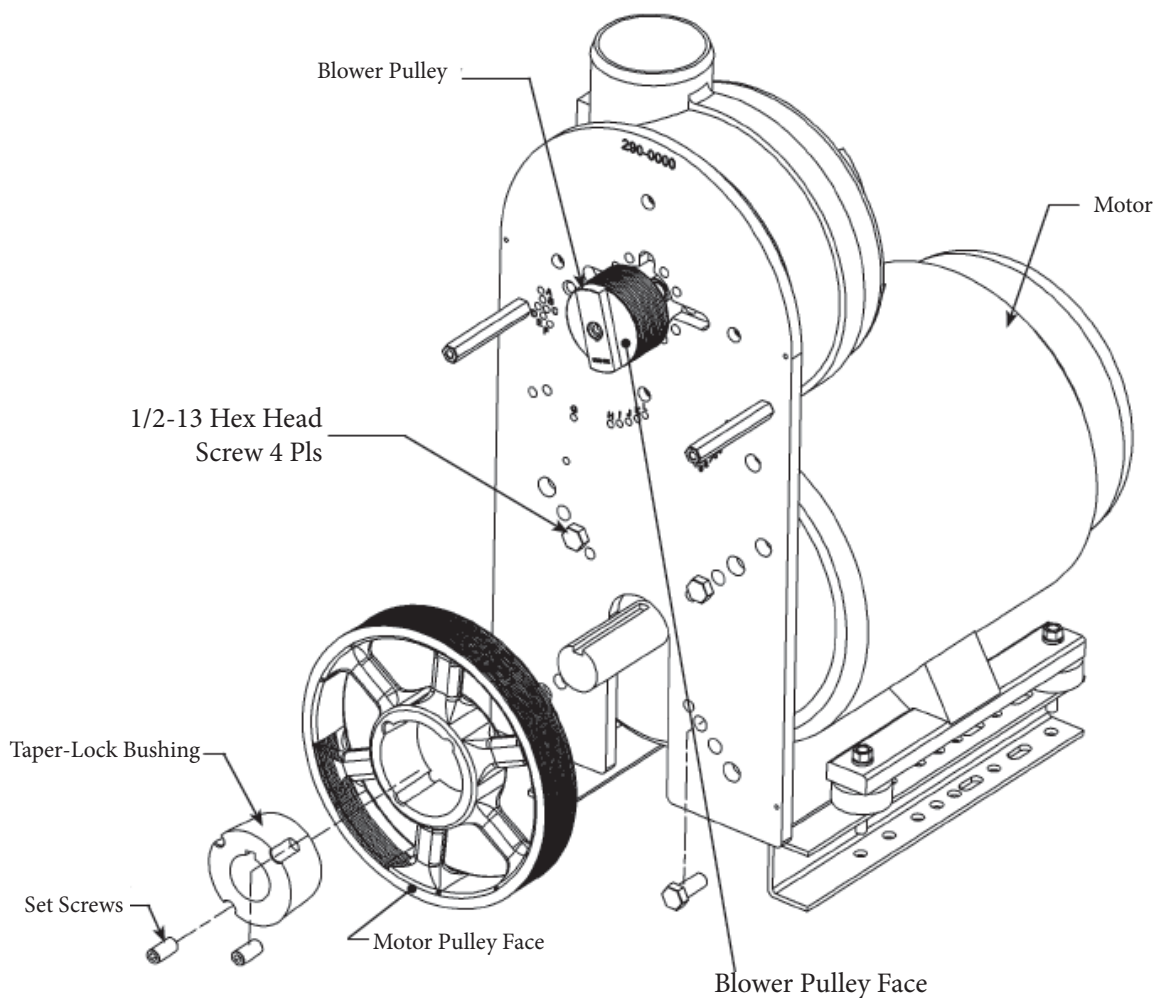
**FIGURE 2**





## MOTOR PULLEY INFORMATION

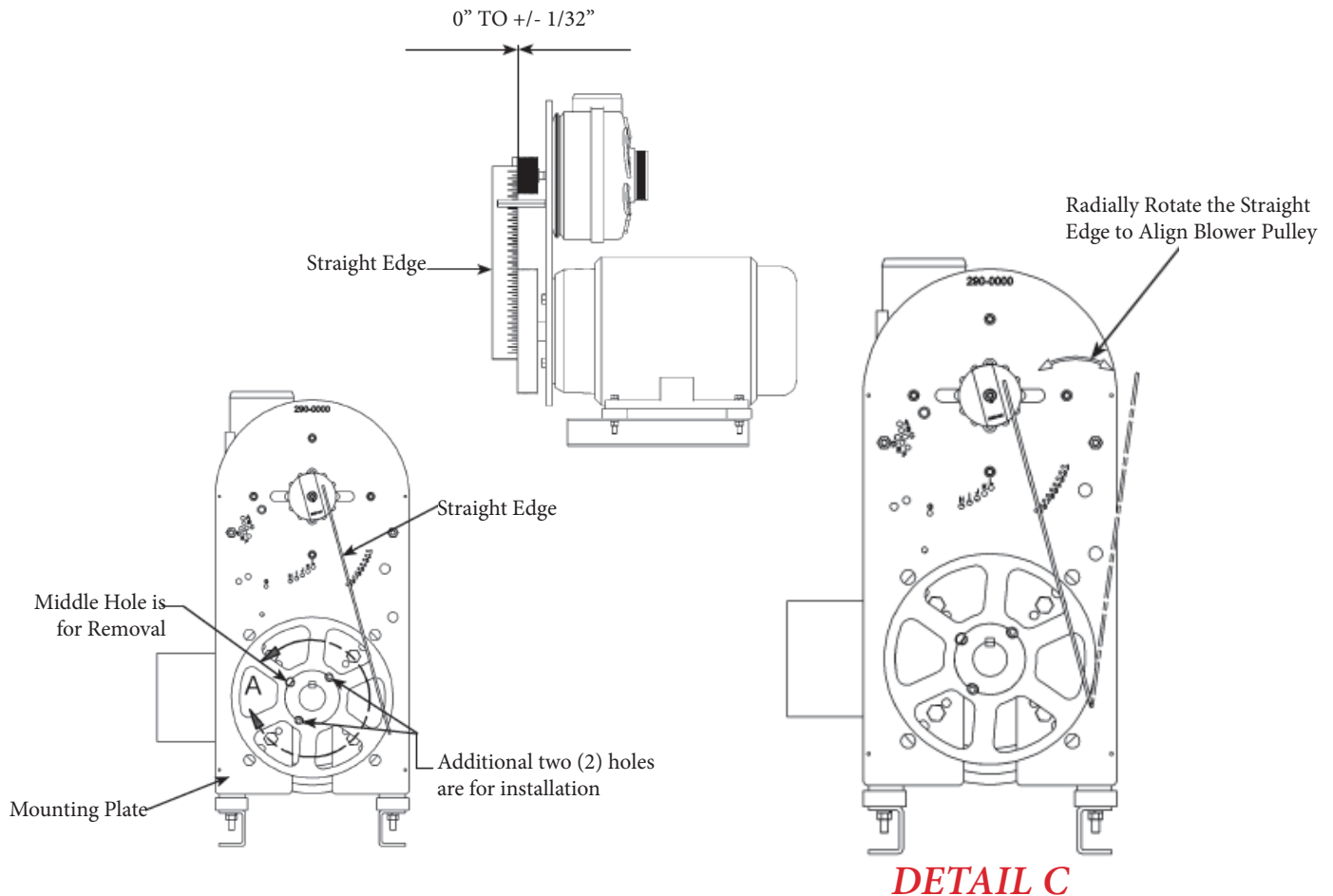
- When installing a new motor pulley or servicing your existing unit, make sure that the outer grooves on both the motor pulley and blower pulley are not damaged, nicked or dinged.
- Damaged pulley grooves can cause premature belt failures or higher than normal levels of vibration.
- Be sure to use a Torque wrench when installing the Motor Pulley.
- Torque the set screws to 36 ft./lbs. (5m/kg) or 430 in./lbs (5000mm).
- Torque the set screws evenly to ensure proper alignment.



### NOTES:

Tension Pulley has been removed in the views for clarity purposes.

## MOTOR PULLEY INSTALLATION

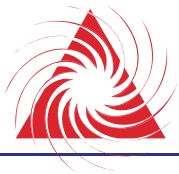


### Motor Pulley Installation Procedure

1. Install Bushing into Motor Pulley with set screws. Then install the Motor Pulley Assembly onto the motor's shaft.
2. Use a straight edge to align the Motor Pulley Face with the Blower Pulley Face. **Alignment must be within 0" to  $\pm 1/32$ "** (0mm to  $\pm .792$ mm). The straight edge must be able to rotate radially and lay flush on two faces of the motor pulley while lying flush on the face of the blower pulley to insure proper alignment (see Detail C).
3. Insert a screw driver through one of the Motor Pulley's and Mounting Plate's holes to keep the Motor Pulley from rotating while tightening the set screws.
4. Using a Torque wrench, set the torque to 36 ft./lbs.. and then torque the set screws equally.

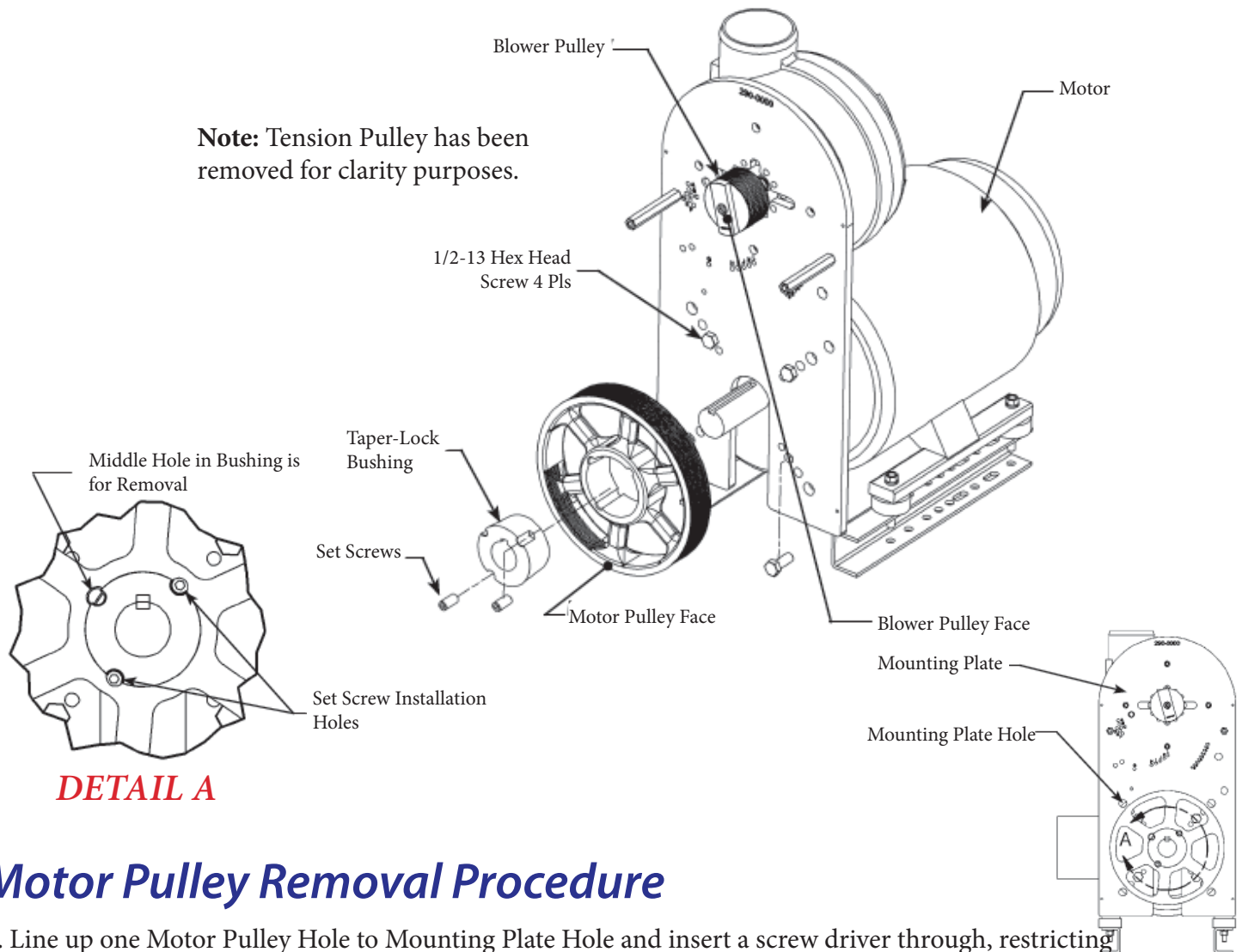
#### **NOTES:**

May be performed by untrained personnel.



## MOTOR PULLEY REMOVAL

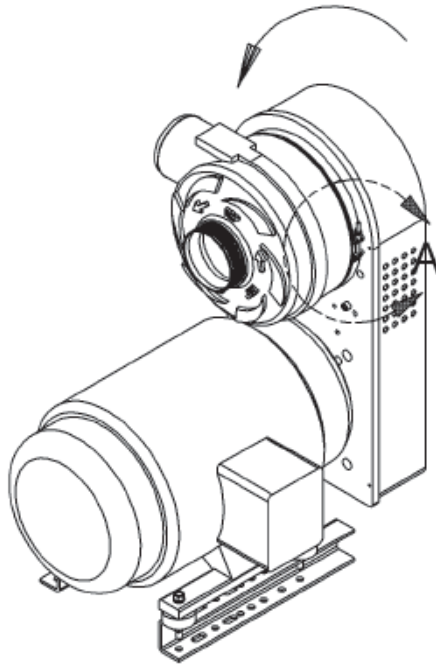
**Note:** Tension Pulley has been removed for clarity purposes.



### Motor Pulley Removal Procedure

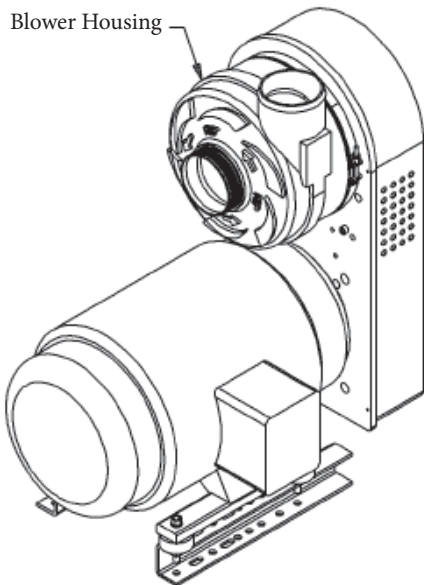
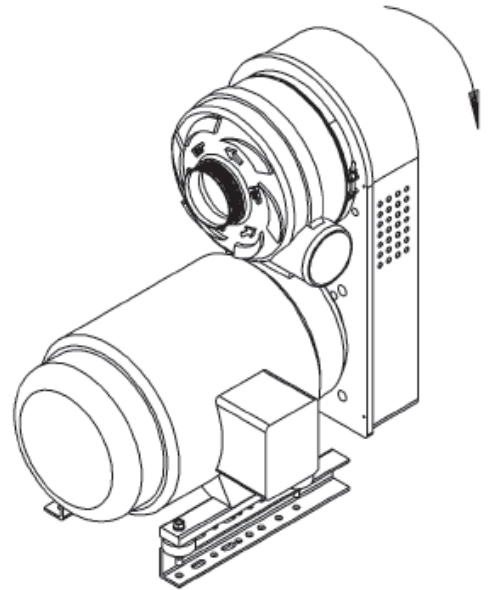
1. Line up one Motor Pulley Hole to Mounting Plate Hole and insert a screw driver through, restricting the Motor Pulley rotation.
2. Use a 1/4" (6.35mm) Allen wrench and remove the two (2) set screws from the Motor Pulley and Bushing.
3. Insert one of the removed set screws into the top Middle Hole of the Bushing.
4. While still keeping the Motor Pulley from rotating, tighten the Middle Hole set screw until the Motor Pulley separates from the Bushing.
5. When the Motor Pulley is loose, slide it off the motor shaft.
6. Be careful not to drop the Motor Pulley and damage the grooves.

## BLOWER HEAD ROTATION

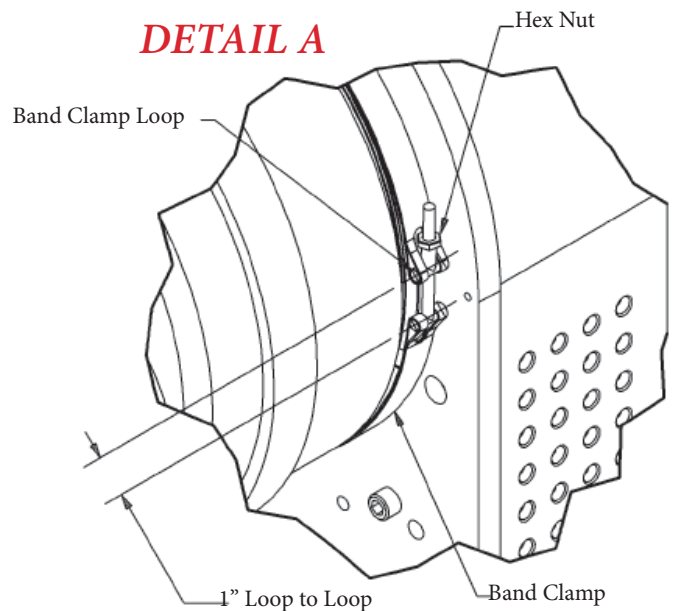


Blower Housing can rotate cw or ccw as shown in these views

**Note:** May be performed by untrained personnel.



### DETAIL A



## Blower Housing Rotational Procedures

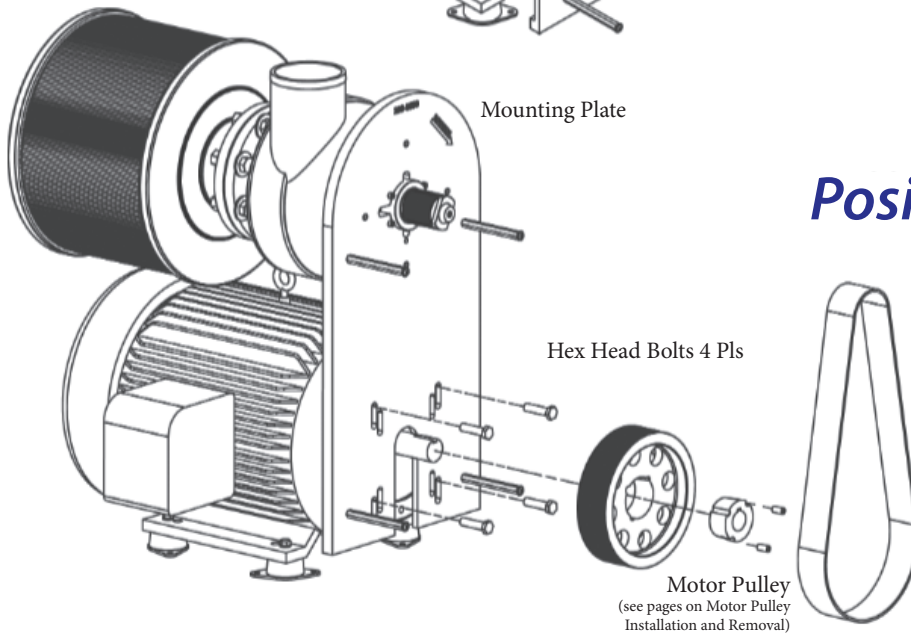
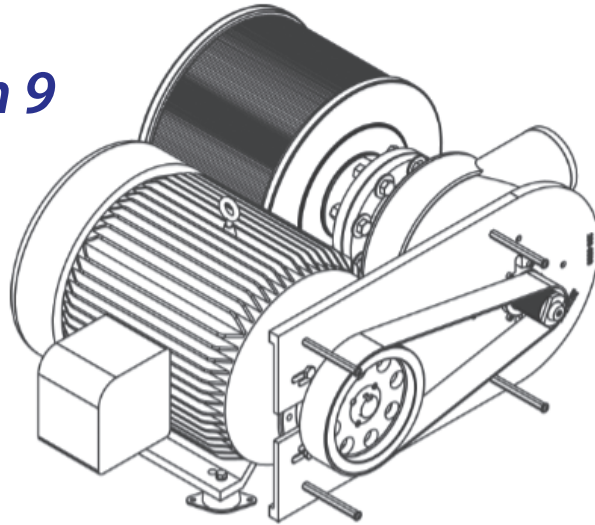
1. Loosen Hex Nut on Band Clamp using 3/8" (9.52mm) nut driver.
2. Rotate Blower Housing to desired position, then hand tighten Hex Nut until Band Clamp Loops are 1" (25.4mm) apart.





## MOUNTING PLATE POSITION

### Position 9



### Position 3

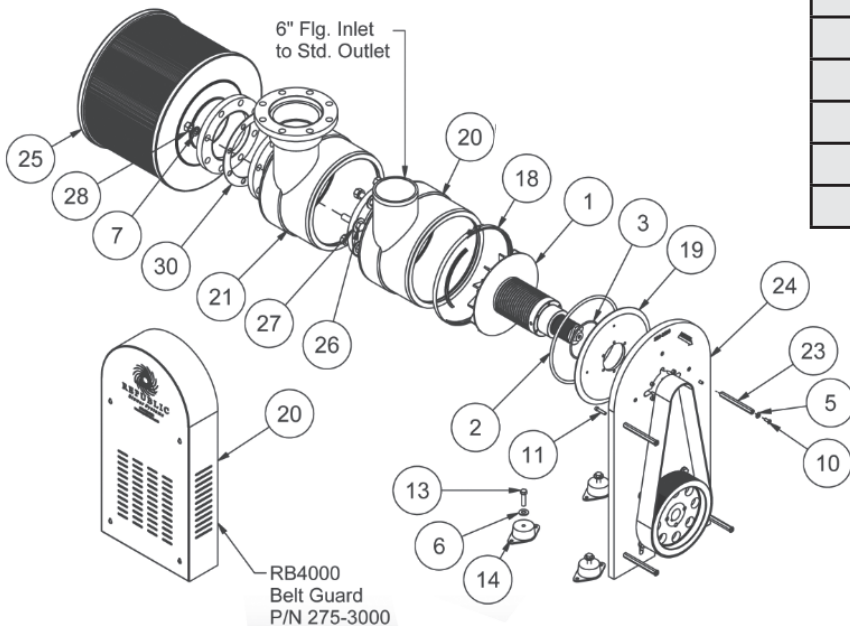
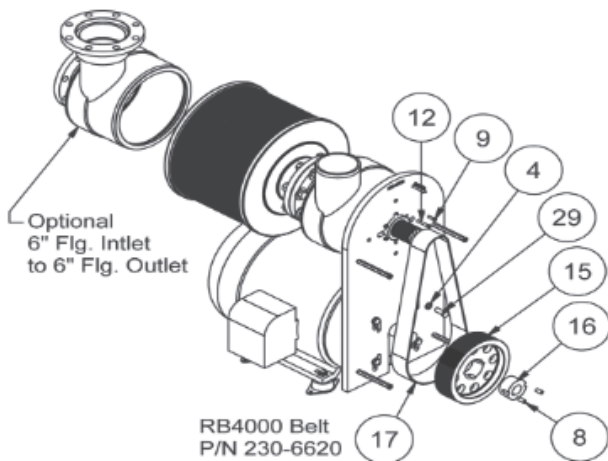
## Mounting Plate Position Procedures

1. Option "A": Remove Motor Pulley then go to Step No. 2.  
Option "B": Leave Motor Pulley on shaft then go to Step No. 2.
2. Remove the four (4) Hex Head Bolts from the Mounting Plate behind the Motor Pulley.
3. Rotate Mounting Plate to desired position and re-install Hex Head bolts.



# BLOWER HEAD ASSEMBLY

200-4000



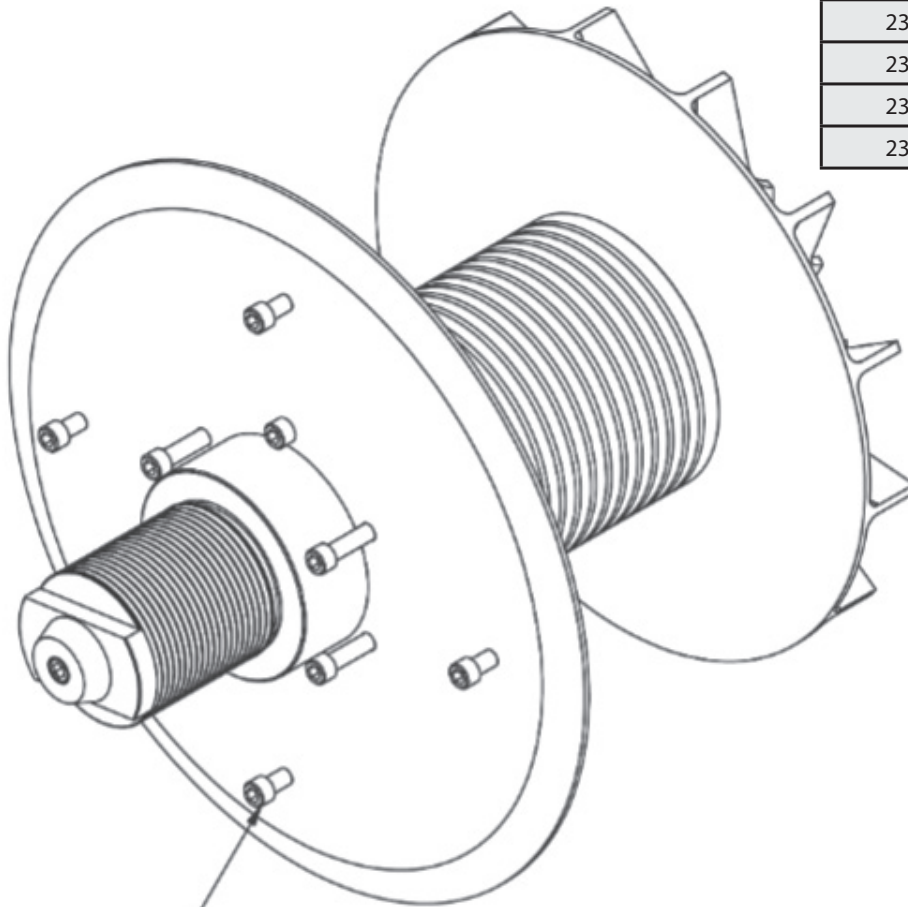
Bill of Materials			
Item No.	Part No.	Qty.	Description
1	200-7xxx	1	RB4000 Bearing Hub Assy
2	210-0205	2	O-Ring 278 Viton
3	210-0206	1	O-Ring 250 Viton
4	210-0321	1	Washer, 5/8 ZP Split Lock
5	210-0322	1	Washer, 5/16-18 SS Flat
6	210-0326	7	Washer, 1/2-13 Flat SS
7	210-0327	4	Washer, 3/4 ZP Split Lock
8	210-1005	2	Set Screw 1/2-13 x 1" Soc Cup Pt
9	210-1602	1	Screw, 5/16-18 x 1 SS SHC
10	210-1607	2	Screw, SS 5/16-18 x 3/4 Button Hd
11	210-1613	2	Screw, 5/16-18 x 3/4 SS SHC
12	210-1614	1	Screw, 5/16-18 x 2-1/2 SS SHC
13	210-1802	1	Screw, 1/2-13 x 2.0 SS Hex Hd
14	210-2201	1	Isolator Mount, 661-30
15	230-1035M	2	RB4000 K-Section Pulley (Machined)
16	230-4003	1	Bushing 1 5/8 Bore 2517 TL
17	230-4003	1	Belt RB4000
18	230-6620	2	Clamp Band Assembly
19	250-0903	1	Housing Plate
20	250-3517	1	Blower-Flange Weldment
21	250-3518	1	Blower-Flange Weldment
22	250-3518FL	1	RB4000 Belt Guard
23	275-3000	4	Stand-Off
24	275-3501	1	Blower Mounting Plate
25	290-3500	1	Poly Inlet Filter Assy.
26	340-2070	8	Screw, 3/4-10 x 3.0 ZP Hex Hd
27	750-0001	8	Washer, 3/4 Flat ZP
28	750-0003	8	Nut, 3/4-10 ZP Hex
29	750-0010	4	Screw, 5/8-11 x 1.50 ZP Hex Hd
30	910-0184	2	6" Flg Gasket (Gas Vapors)



# RB4000 BALANCED BEARING HOUSING ASSEMBLY

*200-7XXX*

Blower Pulley	Bearing Housing Assy. Part. No.
231-3575	200-7275
231-3595	200-7295
231-0315	200-7315
231-0335	200-7335
231-0355	200-7355
231-0375	200-7375
231-0395	200-97395



Housing Mounting  
Screws (210-1602)

## **NOTES:**

Bearing Housing Assembly sold as a balanced unit with specified pulley.

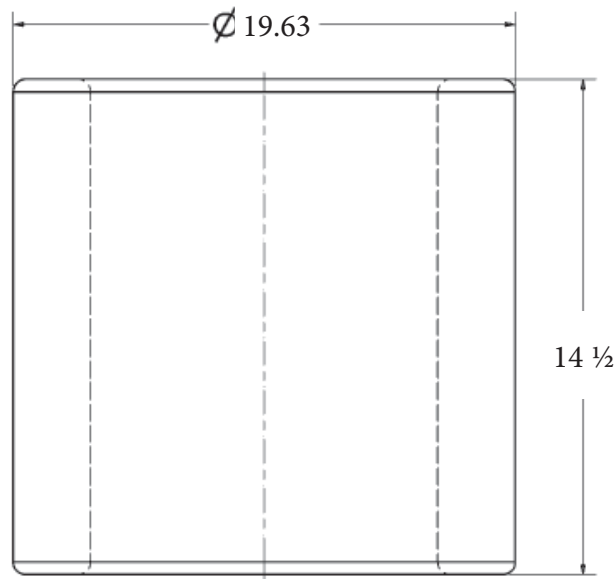
## AIR FILTER INFORMATION

Check air filters and filter gauges on a periodic basis and replace as needed. Filter gauges are located on the air filter canister (as an optional feature) or on the acoustical enclosure doors (standard feature). Dirty or clogged air filters can cause improper performance from the blower system.

Republic Manufacturing recommend that customers keep spare air filters in stock. Spare filters are also available from your local Republic Distributor. Call (800) 847-0380 to order filters.



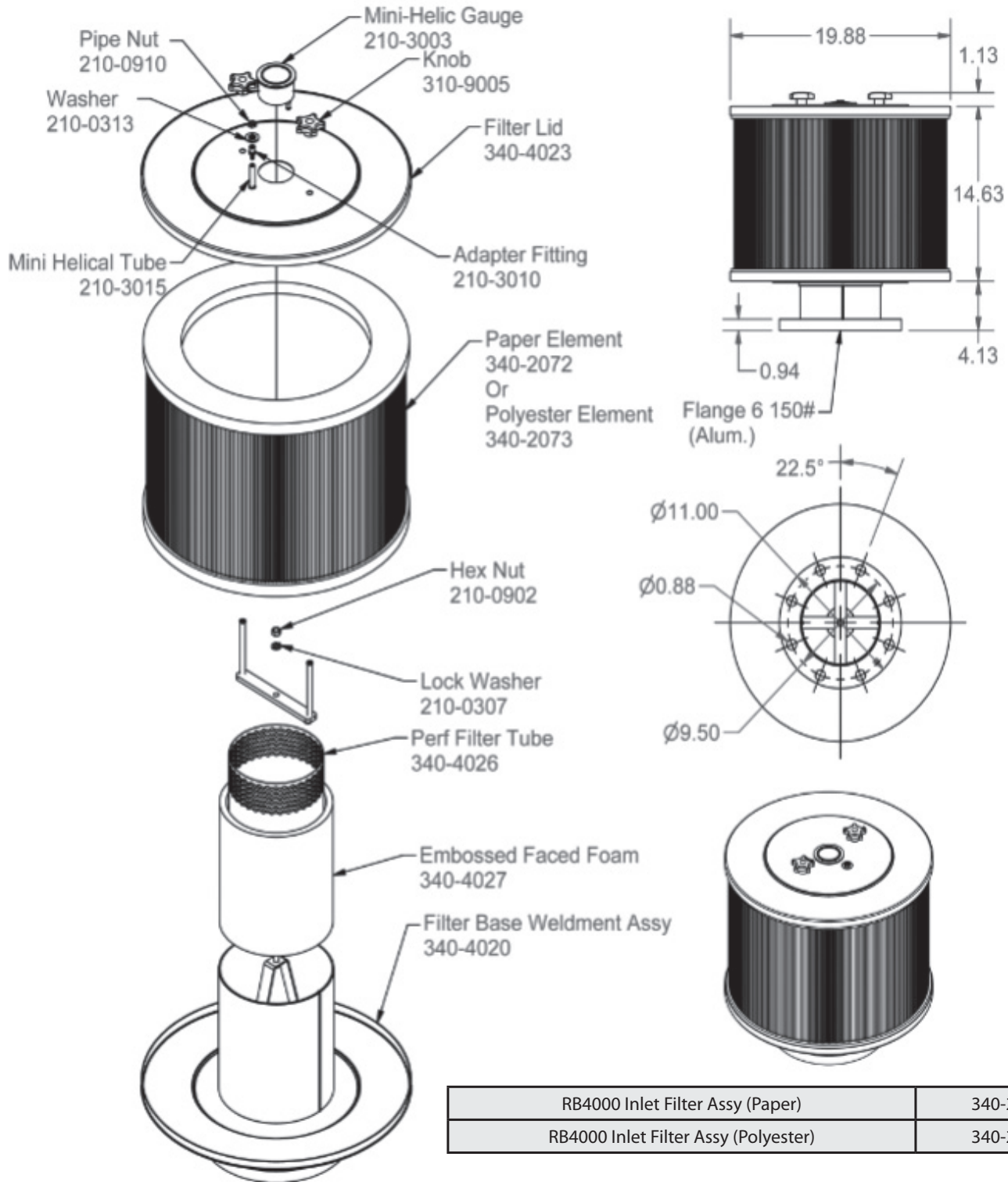
Replacement Filter Reference			
Paper Element	340-2072	Polyester Element	340-2073



Replacement Filter Reference			
Paper Filter	4705 CFM	Min. Temp. -15°F/Max. Temp. 220°F	99.9% efficiency to 2 Micron
Polyester Filter	4705 CFM	Min. Temp. -15°F/Max. Temp. 220°F	99+% efficiency to 2 Micron

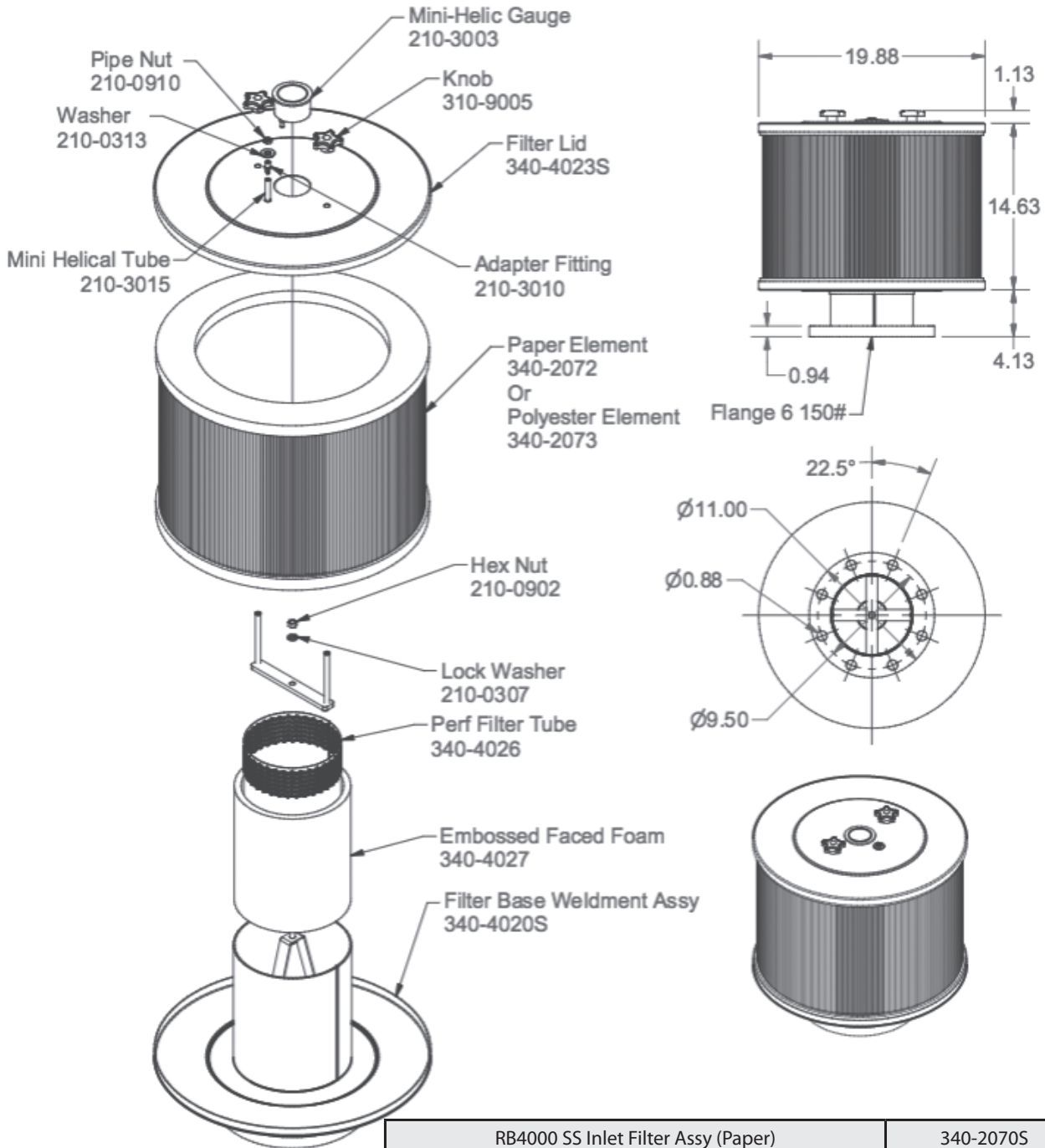


# RB4000 INLET FILTER ASSEMBLY



RB4000 Inlet Filter Assy (Paper)	340-2070
RB4000 Inlet Filter Assy (Polyester)	340-2071

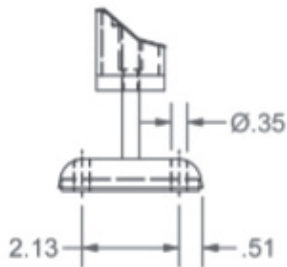
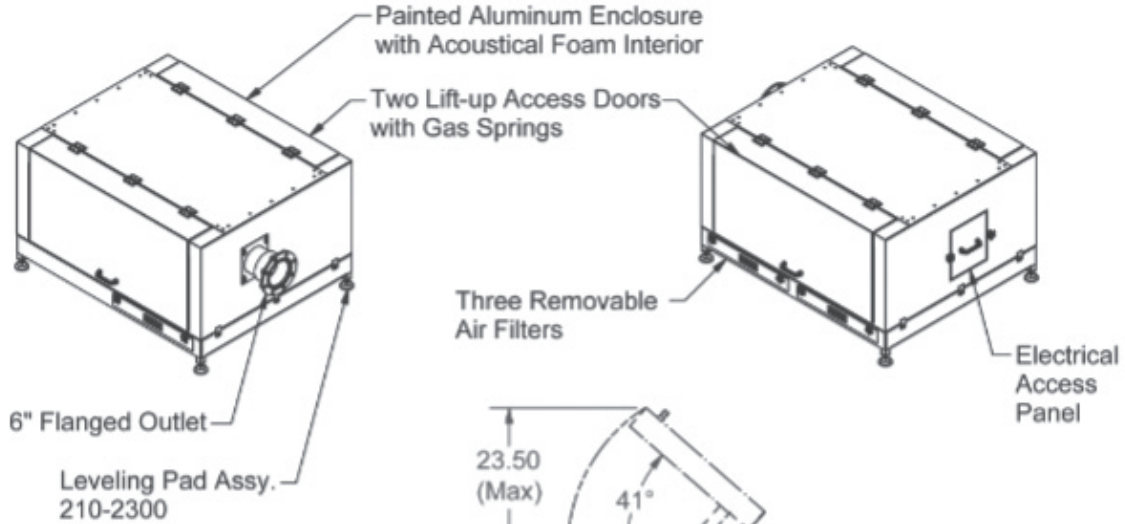
# RB4000 INLET FILTER ASSEMBLY (STAINLESS STEEL)



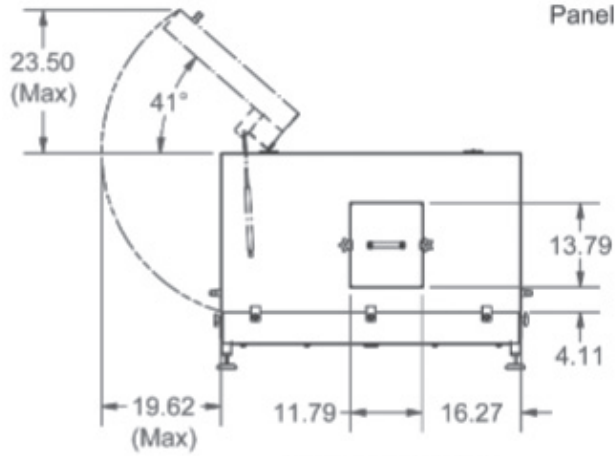
RB4000 SS Inlet Filter Assy (Paper)	340-2070S
RB4000 SS Inlet Filter Assy (Polyester)	340-2071S



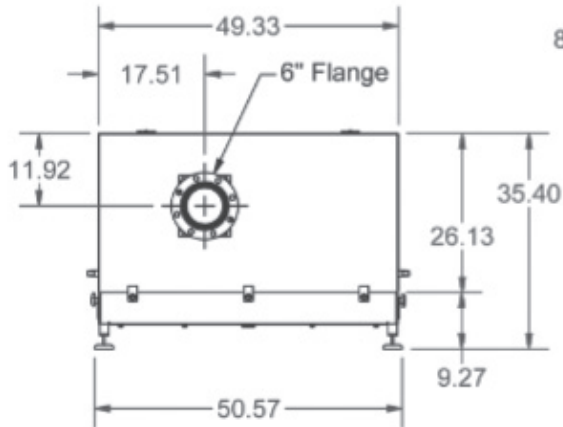
# RB4000 LOW PROFILE ENCLOSURE



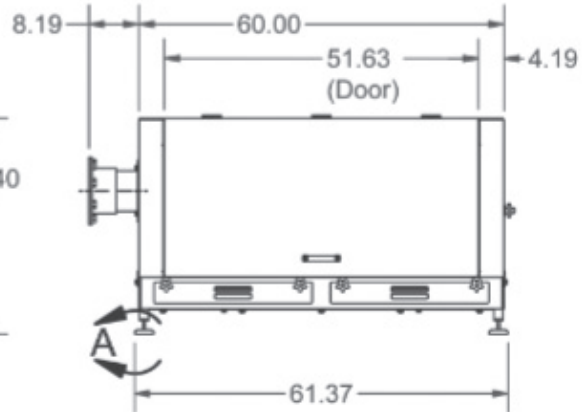
DETAIL A



RIGHT SIDE



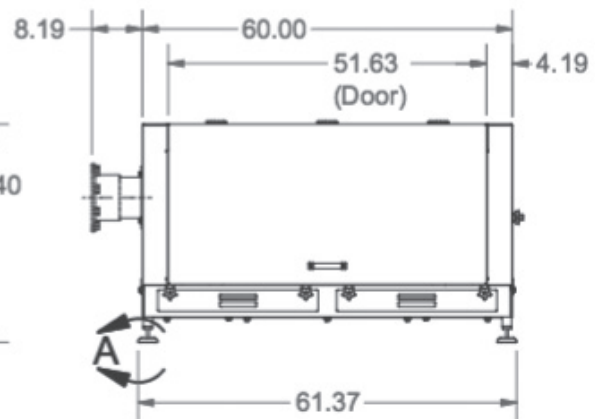
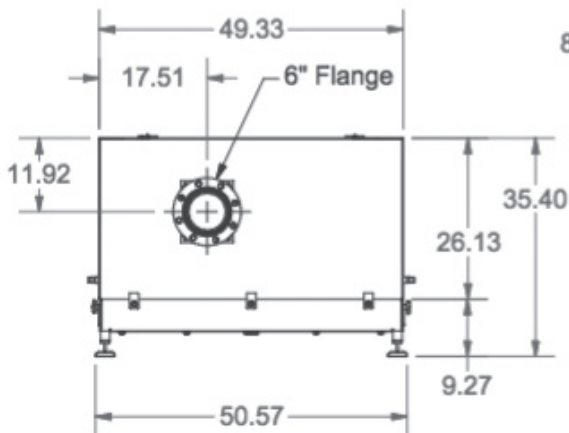
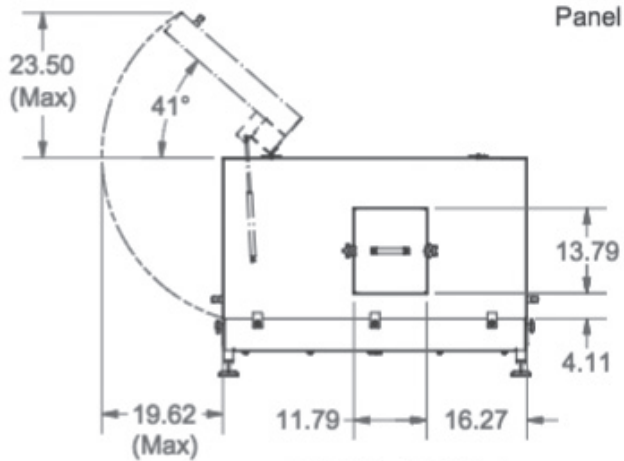
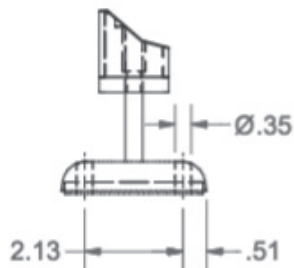
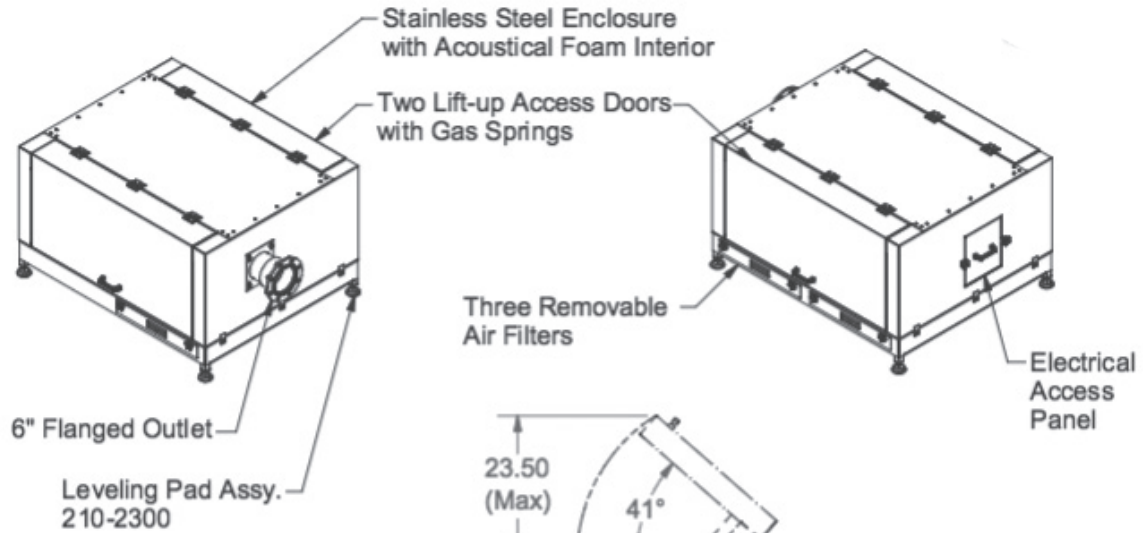
LEFT SIDE

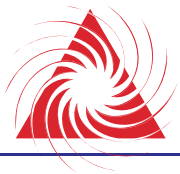


FRONT

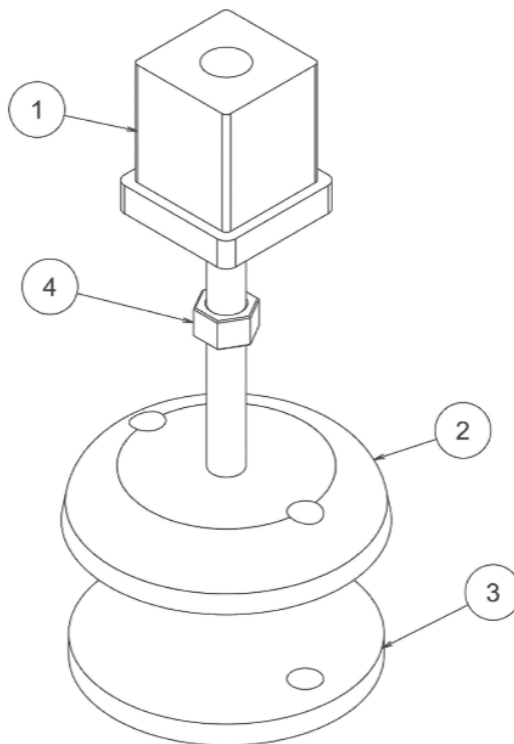


# RB4000 ENCLOSURE (STAINLESS STEEL)





## LEVELING PAD ASSEMBLY



Item No.	Part No.	Qty.	Description
1	21-2205	1	Tube End, Threaded 3/8-16
2	210-2206	2	Leveler, 3/8-16 (#VG-505-02-P38-L3)
3	210-2207	3	Pad, Leveler
4	210-0902	4	3/8-16 SS Hex Nut



# BLOWER MAINTENANCE SCHEDULE

## Filter Maintenance

Replacement Filter Reference			
Paper Element	340-2070	Polyester Element	340-2071

Filters should be changed as needed to maintain a differential pressure of less than 10” (inches) of water pressure differential. The dial on your filter change gauge should be in the green zone. Normal change intervals are between every two (2) weeks and 90 days depending on the contamination levels in your plant. See Filter Data Reference for additional information.

Filter Data Reference			
Paper Element	4705 CFM	Min. Temp. -15°F/Max. Temp. 220°F	99.9% efficiency to 2 Micron
Polyester Element	4705 CFM	Min. Temp. -15°F/Max. Temp. 220°F	99.9% efficiency to 2 Micron

## Enclosure Filter Maintenance

### REPLACEMENT PART NO. 292-0002 (METALLIC)

This filter is designed to remove large contaminants from entering the inside of your enclosure. It is an oil wetted wire mesh filter. Recommended cleaning interval is weekly or as needed in your facility. If this filter gets dirty, your blower could overheat and discharge pressure could be reduced.

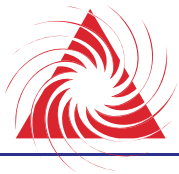
### CLEANING PROCEDURE FOR PART NO. 292-0002

Cleaning Procedure for Part No. 292-0002

1. Blow off contaminants with compressed air.
2. Clean with solvent in a parts washing tank.
3. Spray with a light coating of WD 40 or similar lightweight oil.

## Pulley Alignment

**Proper pulley alignment is very important.** Please see alignment instructions on pages 20.



## BEARING HOUSING REPLACEMENT PART NUMBERS

REPLACEMENT RB4000 BEARING HOUSING ASSEMBLY REFERENCE	
Blower Pulley Part No.	Bearing Housing Assy. Part No.
230-0275	200-9275
230-0295	200-9295
230-0315	200-9315
230-0335	200-9335
230-0355	200-9355
230-0375	200-9375
230-0395	200-9395

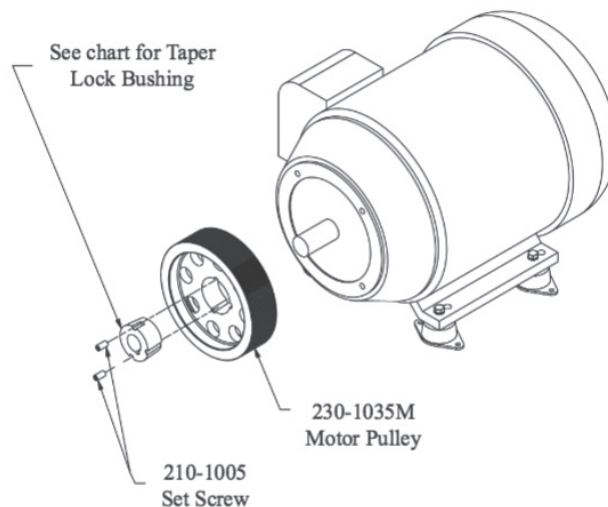
Bearings are a greased for life design. Bearings are assembled in a clean room environment. Do not attempt to grease bearings or your warranty will be void. If bearings fail in the blower housing, Republic recommends changing the Bearing Housing. Contact the local distributor or Republic Manufacturing (800) 847-0380 if assistance is needed in identifying the pulley size.

## MOTOR PULLEY AND BUSHING MAINTENANCE

Replacement Motor Pulley Reference	
RB4000	230-1035M

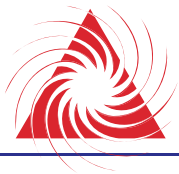
Replacement Motor Pulley Bushing Reference		
Motor HP	Bushing Part No.	Bore
30HP	230-4005	1 $\frac{7}{8}$ "
40HP	230-4005	1 $\frac{7}{8}$ "
50HP	230-4005	1 $\frac{7}{8}$ "
60HP	230-4005	1 $\frac{7}{8}$ "
75HP	230-4005	1 $\frac{7}{8}$ "

When installing a new motor pulley or servicing your existing unit, verify the outer grooves on both the motor pulley and blower pulley are not damaged, nicked or dinged. Damaged pulley grooves can cause premature belt failures or higher than normal levels of vibration. Be sure to use a torque wrench when installing the motor pulley. Torque the setscrews to 36 ft./lbs. (5m/kg) or 430 in./lbs. (5000mm). Torque the setscrews evenly to ensure proper alignment.



# TROUBLE SHOOTING GUIDELINES

Problem	Cause	Suggested Action
<b>Low Flow, Pressure or Vacuum</b>	Blower is rotating backwards	
	(Check the motor wiring)	
	Dirty or contaminated filter	
	Collapsed flex hose or piping	Replace hose or piping
	Worn or damage Impeller	Replace Bearing Housing
	Worn belt (slipping)	
	Belt Tensioning Spring worn out	
	Butterfly valve is closed	Open butterfly and check amperage
	Piping design too small for the application	Call Republic Blower Systems or Local Distributor
	Improper blower application	Call Republic Blower Systems or Local Distributor
	Air leakage	Check all connections
	<b>Electrical Over-loading</b>	Exceeding the designed CFM of the blower motor
Blower RPM too high		
Damaged motor bearing or winding		
Electrical supply problems		
Blower not connected to air knives or pipe		
<b>Irregular Noise</b>	Blockage in the air lines or piping	
	Leakage in the pipes, cracked or loose flex hose	
	Frayed or a bad belt	Replace belt and spring
	Bolts loose on the motor mounts	
	Blower bearings are worn	
	Motor bearings worn or motor fan is rubbing	
<b>Belt Slipping</b>	Blower is receiving vibration from other equipment in the vicinity	
	Worn belt	Replace belt & spring
	Belt is contaminated due to the environment	Clean or replace belt
	Pulley grooves worn, check both pulleys	Replace Pulley
	Dirt, dust or debris pulled inside the belt guard area	Clean area
	Incorrect belt size	
	Low belt tension	Replace belt



## TROUBLE SHOOTING GUIDELINES

Problem	Cause	Suggested Action
<b>Belt Slipping</b>	Residue build-up on pulley(s)	Clean pulley(s) with a brass brush
	Bearings seized	Replace Bearing Housing
	Foreign material preventing Bearing Housing from rotating freely	Replace Bearing Housing
<b>Belt Fraying</b>	Foreign material rubbing on belt	Remove foreign material, change belt & spring
	Belt is not seated correctly on pulleys and overlapping edges	Align belt correctly, change belt & spring
	Worn belt	Replace belt & spring
<b>Belt is Jumping or Disintegrating</b>	Motor Pulley out of alignment	See alignment guidelines
	Worn belt	Replace belt & spring
	Pulley grooves worn, check both pulleys	Replace pulley(s)
	Belt is contaminated	Clean or replace belt
	Residue build-up on pulley(s)	Clean pulley(s) with a brass brush
	Bearings seized	Replace Bearing Housing
	Foreign material preventing Bearing Housing from rotating freely	Replace Bearing Housing
Frequent motor starting and stopping	Attach soft start	

## WARRANTY TERMS AND CONDITIONS

Republic Manufacturing® Company warrants all finished Republic Blower Systems® products to be free from functional defects in material and workmanship for a period of twelve (12) months from the date of installation, or no longer than eighteen (18) months from shipment.

Wear parts such as drive belts, filter elements, hoses and pulleys are not covered by the 12 to 18 month warranty.

### DISASSEMBLY OF BLOWER MAY VOID WARRANTY.

To obtain service within the warranty period, first contact your authorized Republic Manufacturing® dealer or Republic Manufacturing® Service Department. Republic's responsibility under this warranty shall be to provide an analysis of the blower, which will determine course of action. Any product found to be defective within the warranty period will merit either:

- a. A no charge repair of existing blower. Any freight charges will be the purchaser's responsibility.
- b. A replacement blower\*. Any freight charges will be the purchaser's responsibility.

\*This option would be chargeable replacement until the original blower is received by Republic Manufacturing® and warranty is approved.

Republic Manufacturing® shall not be liable for incidental nor consequential damages resulting from the use of this product. There are no expressed nor implied warranties, which extend beyond the warranty of merchantability or fitness for a particular purpose to the equipment and/or its parts and components.



5131 Cash Road Dallas, TX 75247

800.847.0380

[www.republic-mfg.com](http://www.republic-mfg.com)

